

JMA-3300 Radar



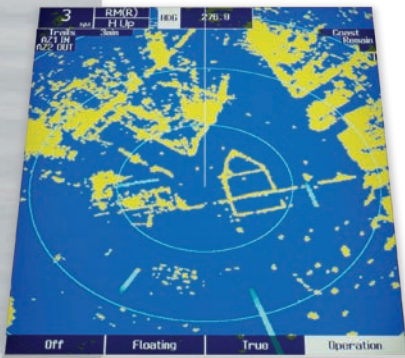
- JRC's new radar incorporates the latest leading technologies

10.4-inch ultra bright LCD
New System-on-Chip technology
Semi-Constaview™ digital signal processing
AIS and MARPA+™ as standard
High speed version available

JMA-3300 series – features

Features

The JMA-3300 series is JRC's newest radar, featuring a 10.4-inch ultra bright LCD, and incorporates the latest digital signal processing for excellent target identification and detection in a compact design.



Display

The tough glass bonded LCD is backlit by white LED's giving 1000cd/m² of brightness, making the radar image amazingly sharp. A feature not previously found on this class of radar.



System-on-Chip

JRC engineers custom designed the System-on-Chip (SoC) inside the new JMA-3300 series to be an extremely powerful tool. With such a small chip, weighing less than a sugar cube, performance remains at our high standards. At the same time, the SoC technology makes the compact radar very power efficient.

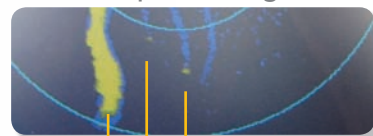
AIS and MARPA+™

The new radar has the ability to display 50 AIS symbols, and 10 MARPA+™ tracking targets as standard. The high quality of the display provides outstanding target definition and discrimination. The (second generation) MARPA+™ continues JRC's successful MARPA™ technology first found in the previous JMA-2300 radar series. Our engineers continued developing and improving the technology, until now, with MARPA+™, manual or automatic target tracking is even more reliable.

Without SoC processing



With SoC processing



Clear land echo
Small boat
Jet ski

Semi-Constaview™

Based on JRC's patented technology found in the bigger radars, the new JMA-3300 integrates Semi-Constaview™. This allows fast processing of targets, showing true trails in Head-Up mode, without interference of fixed targets, such as land or mass.

Sea trials

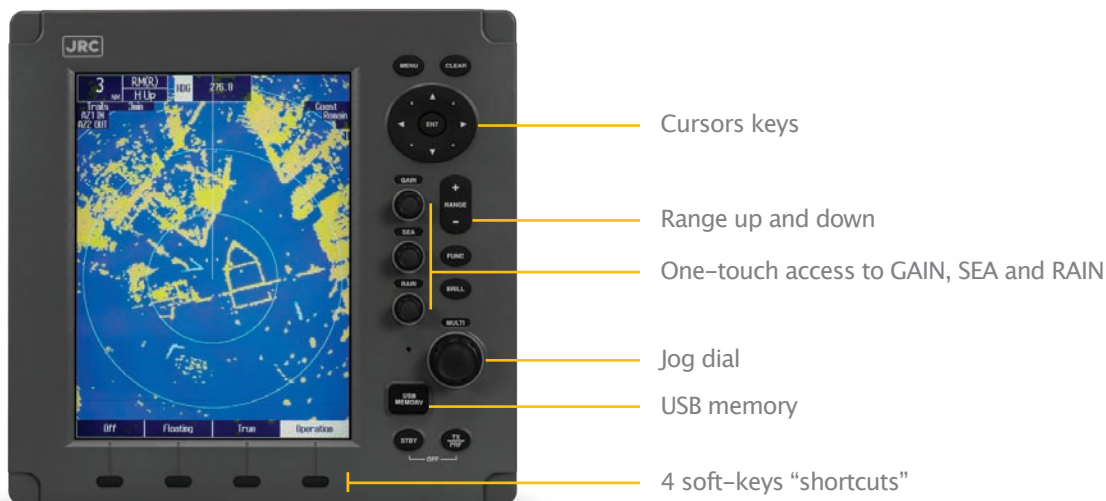
With Mount Fuji in the background, JRC engineers successfully tested the new JMA-3300 radar in Suruga Bay. See on the left side actual photos results of our SoC technology. Land echoes are clearly visible and smaller echoes are far more enlarged than bigger echoes, giving a better on-screen separation and identification.

JMA-3300 series

- easy user interface

Simple operation

Smooth and comfortable operation is guaranteed with the solid and responsive feel of the keys. A dedicated jog-dial is conveniently integrated as well as the function keys for one-touch access to GAIN, SEA and RAIN. The JMA-3300 also incorporates 4 soft-key switches just below the display that can be assigned by the user. Here you can specify commonly used functions, making it even simpler to navigate.



Trails

Other ship's movement and speed can be monitored from length and direction of their trails, primarily serving for collision avoidance. It integrates four different trail length modes, which will show a ship's course instantly, a unique operational feature that allows for more flexibility.



Transparent menus

With the transparent (pop-up) windows, you can navigate through menus or view required data, such as own ship data or cursor data, without losing the complete radar image.

Languages

The JMA-3300 series allows you to switch between English, Japanese, French, German, Spanish, Italian, Portuguese and Norwegian.

USB

Updating your radar with the latest software is made easy with a conveniently integrated USB port on the front side of the display.

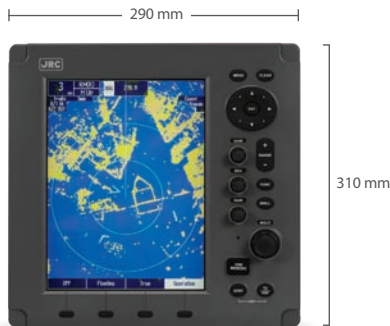


JMA-3300 series

- specs

Size and weight

NCD-2182 Weight 5 kg



	2 ft NKE-2042	11 kg
	3.9 ft NKE-2062 NKE-2062HS	24 kg 24 kg
	4 ft NKE-2103-4 ¹ NKE-2103-4HS ¹	34 kg 34 kg
	6 ft NKE-2103-6 ¹ NKE-2103-6HS ¹	36 kg 36 kg

(→) In and out (←)

→ (D)GPS sensor (JLR-4340/4341)

← TTM for chart plotter

1. Brushless motor

2. Excludes 30 m cable for 4/6 kW model when 12V DC is fed

What's in the box

- Display
- Scanner
- Cables
- Spare parts
- Operation guide/manual
- Installation manual

Which cables

- Display to scanner² 5/10/15/20/30 m

Options

- Display cover



Specifications

	JMA-3314	JMA-3316	JMA-3316-HS	JMA-3340-4	JMA-3340-4HS	JMA-3340-6	JMA-3340-6HS
Output power	4 kW	6 kW		10 kW			
Antenna length	2 ft	3.9 ft		4 ft		6 ft	
Rotation speed	27 rpm	16-27 rpm	27-48 rpm	16-27 rpm	27-48 rpm	16-27 rpm	27-48 rpm
Power	12V to 24V DC		24V DC				
Consumption	60 W	85 W (max 180W)		100 W (max 230W)			
Range scale ¹	0.125 / 0.25 / 0.5 / 0.75 / 1.5 / 3 / 6 / 12 / 24 / 48 / 72 NM						
Display	Glass bonded 10.4-inch LCD display (640 by 480 pixels) 1000cd/m ² by white LED backlit						
Presentation mode	RM = North/Head/Course-up, TM = North/Course-up						
Trail indication	4 stages (example 1 minute to 1 hour or continuous)						
MARPA+™	10 targets (auto/manual)						
MARPA+™ tracking range	20 NM						
Vector mode and length	True/relative vector, adjustable from 1 to 60 minutes						
Guard zone	2 zones						
Target data	True bearing, range, true course, true speed, CPA, TCPA						
Alarms	CPA/TCPA, new target, lost, system						
AIS targets	50 targets						

1. 4 kW up to 48 NM, 6/10 kW up to 72 NM

JRC in Europe/Africa

Cessnalaan 40-42
1119 NL Schiphol-Rijk
The Netherlands

T +31 20 658 0750
F +31 20 658 0755
W jrceurope.com

JRC in Asia/Oceania

Fujisawa bldg. 30-16
Ogikubo 4-chome Suginami-ku
Tokyo 167-8540, Japan

T +81 3 6832 1721
F +81 3 6832 1845
W jrc.co.jp

JRC in the Americas

1021 SW Klickitat Way, D-101
Seattle, WA 98134
USA

T +1 206 654 5644
F +1 206 654 7030
W jrccamerica.com